













# SHIMS

Booklet 2024

Stock, Precut, and Customizable Shims



	<b>Products</b>	<b>Model</b>	<b>Page</b>
	Shim Plate Stainless Steel	17ST	1
	Shim Plate Brass	17BR	2
	Shim Roll Box	17BTST	2
	Shim Plate Box	17BSST	2
	Hasberg-Schneider Shims	17R376	3
	Ring Shims	17WST	4
	C-Shims	17RST	4
	Small Precut Slotted Shims	17MST	5
	Precut Slotted Shims	17MST	6
	Precut Slotted Shim Sets	17MST	7

**Our Shims** made of selected materials suitable for use as shims. Thickness of all shims is controlled to be as close as specified; with high hardness and springness to reduce any possibilities of thickness change in use.

**Shims for**

- › To support/bear works.
- › To insert for gap width measurement.
- › To bear a foundation for aligning power axle levels.
- › To cut into shapes for supporting wear failures.
- › For other works as appropriate.

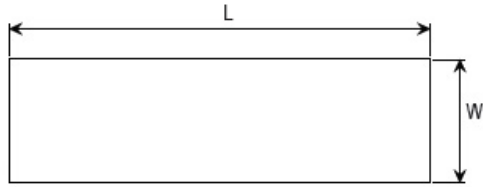


**Expert of Industrial Parts**

*Sun Rise Technologies Co.,Ltd.* was founded in 2004 to distribute products for metal and engineering industry. With over 30-years experiences of our executives in automotive die & mold industry. To fulfill the need for high-quality products that can be customized.

*Sun Rise Property Co.,Ltd.* was founded as a manufacturing arm for **OIL FREE™** self lubricating bearings in the same year. Closely followed by establishing of **SRT™** industrial tools and equipments for professionals.

# Stainless Steel Shim Plate 17ST



**M** Shim Grade Stainless Steel

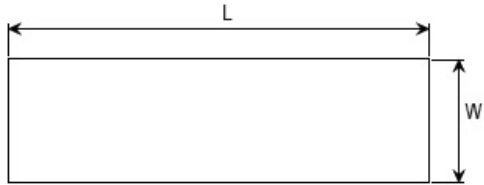
<b>ORDER</b>	17ST	Thickness - W - L
<b>EXAMPLE</b>	17ST0.50x150x1M	

Stainless steel shim plate selection is based on thickness, width, and length of the plate.

For sizes not displayed in the table, you can make a request for a special size. Minimum quantity might be different depend on the size.

Model	Thickness (mm)	W (mm)		L (M)	
17ST	0.01	100	300	1M	2M
	0.02	150	300	1M	2M
	0.03	150	300	1M	2M
	0.04	150	300	1M	2M
	0.05	150	300	1M	2M
	0.06		300	1M	2M
	0.07		300	1M	2M
	0.08		300	1M	2M
	0.09		300	1M	2M
	0.10	150	300	1M	2M
	0.20	150	300	1M	2M
	0.25		300	1M	2M
	0.30	150	300	1M	2M
	0.40	150	300	1M	2M
	0.50	150	300	1M	2M
	0.60	150		1M	
	0.70	150	300	1M	2M
	0.80	150	300	1M	2M
	1.00	150	300	1M	2M
	1.20	150		1M	
1.50	150		1M		
2.00	150	300	1M	2M	
3.00	150		1M		
4.00	150		1M		
5.00	150		1M		

## Brass Shim Plate 17BR



<b>ORDER</b>	17BR	Thickness - W - L
<b>EXAMPLE</b>	17BR0.05x150x1M	

Brass shim plate selection is based on thickness, width, and length of the plate.

For sizes not displayed in the table, you can make a request for a special size. Minimum quantity might be different depend on the size.

**M** Shim Grade Brass

Model	Thickness (mm)	W (mm)	L (M)
17BR	0.05	150	300
	0.10	150	300
	0.20	150	300
	0.30	150	300
	0.40	150	300
	0.50	150	300
	0.80	150	
	1.00	150	300

## Shim Roll Box 17BTST

**M** Shim Grade Stainless Steel



Model: 17BTST  
W150 x L2000

Order Code	Thickness (mm)	W (mm)	L (mm)	No. / Box
17BTST150-005	0.05	150	2000	1
17BTST150-010	0.10			
17BTST150-020	0.20			

## Shim Plate Box 17BSST

**M** Shim Grade Stainless Steel



Model: 17BSST  
W150 x L500



Packing 4 plates / box

Order Code	Thickness (mm)	W (mm)	L (mm)	No. / Box
17BSST150-030	0.30	150	500	4
17BSST150-040	0.40			
17BSST150-050	0.50			
17BSST150-100	1.00			

# Hasberg-Schneider Shims 17R376



Stainless steel and carbon steel shims from Germany packed in convenient to use box.



Shim Tape



Shim Box

## Shim Materials



Carbon Steel  
Material 1.1274



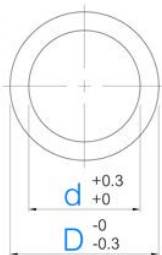
Stainless Steel  
Material 1.4301

Thickness (mm)	Order Code						Tolerance (mm)
	Shim Tape					Shim Box (10pc/box)	
	12.7mm x 2m	12.7mm x 5m	25mm x 5m	50mm x 5m	100mm x 5m	50mm x 300mm	
0.005	17R376-G5B						±0.001
0.01	17R376-01B					17R376-01K	
0.02	17R376-02B				17R376-02G	17R376-02K	±0.002
0.03	17R376-03B		17R376-03F	17R376-03G		17R376-03K	
0.04	17R376-04B					17R376-04K	
0.05	17R376-05B		17R376-05F	17R376-05G	17R376-05H	17R376-05K	±0.003
0.06	17R376-06B					17R376-06K	
0.07	17R376-07B					17R376-07K	
0.08	17R376-08B					17R376-08K	
0.09	17R376-09B					17R376-09K	±0.004
0.10	17R376-10B	17R376-10C	17R376-10F	17R376-10G	17R376-10H	17R376-10K	
0.12	17R376-12B						
0.15	17R376-15B						±0.005
0.18	17R376-18B						
0.20	17R376-20B		17R376-20F	17R376-20G	17R376-20H	17R376-20K	±0.006
0.25	17R376-25B						
0.30	17R376-30B		17R376-30F	17R376-30G	17R376-30H	17R376-30K	±0.007
0.35	17R376-35B						±0.008
0.40	17R376-40B			17R376-40G	17R376-40H	17R376-40K	±0.009
0.45	17R376-45B						
0.50	17R376-50B	17R376-50C	17R376-50F	17R376-50G	17R376-50H	17R376-50K	±0.01
0.60	17R376-60B					17R376-60K	
0.70	17R376-70B					17R376-70K	±0.012
0.80	17R376-80B					17R376-80K	
0.90	17R376-90B					17R376-90K	±0.013
1.00	17R376-A0B				17R376-A0H	17R376-A0K	

# Ring Shims

**17WST**

Shim Grade Stainless Steel


**ORDER EXAMPLE**
**17WST** d - D - T  
 17WST2x4x0.05

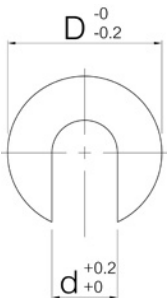

Pack Size 10 Pieces

d (mm)	D (mm)																			T (mm)							
2	4	5	6																		0.05						
3		5	6	7	8	9	10														0.10						
4			6	7	8	9	10	12	13												0.20						
5				7	8	9	10	12	13	14	15	16									0.25						
6					8	9	10	12	13	14	15	16	18								0.30						
8							10	12	13	14	15	16	18	20							0.40						
10								12	13	14	15	16	18	20							0.50						
12									15	16	18	20	21	22							0.70						
15												18	20	21	22	24					1.00						
16														20	21	22	24	28			2.00						
17															20	21	22	24	28	30	32						
20																		24	28	30	32	35	40				
22																			28	30	32	35	40				
25																				30	32	35	40	42			
28																					32	35	40	42	45		
30																						35	40	42	45	50	
35																								42	45	50	55
40																									45	50	55
45																										50	55

# C-Shims

**17RST**

Shim Grade Stainless Steel


**ORDER EXAMPLE**
**17RST** No. x T  
 17RST6x0.05


Pack Size 10 Pieces

Model	No.	T (mm)	d (mm)	D (mm)
17RST	6		6.5	12
	8	0.05	8.5	15
	10	0.10	10.5	20
	12	0.20	13	25
	16	0.25	17	30
	20	0.30	21	35
	24	0.40	25	40
	30	0.50	31	50
		0.70		
		1.00		
	2.00			

# Small Precut Slotted Shims

17MST

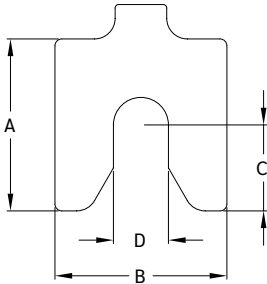


Precut stainless steel shims to support different sizes of screws during machinery installation.

- Easy to use without additional trimming.
- With clearly specified thickness on all plates.
- Made of high quality stainless steel.
- With high hardness, reduce change during use.
- Sale in pack size of 10 pieces.

Shim Grade Stainless Steel

Pack Size 10 Pieces




Order Code	A (mm)	B (mm)	Thickness (mm)	C (mm)	D (mm)
17MST025-005	25	25	0.05	12.5	7
17MST025-010			0.10		
17MST025-020			0.20		
17MST025-025			0.25		
17MST025-030			0.30		
17MST025-040			0.40		
17MST025-050			0.50		
17MST025-070			0.70		
17MST025-100			1.00		
17MST025-200			2.00		
17MST038-005	38	38	0.05	19	13
17MST038-010			0.10		
17MST038-020			0.20		
17MST038-025			0.25		
17MST038-030			0.30		
17MST038-040			0.40		
17MST038-050			0.50		
17MST038-070			0.70		
17MST038-100			1.00		
17MST038-200			2.00		



# Precut Slotted Shims

17MST

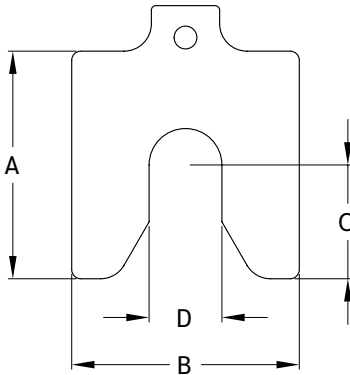
 Shim Grade Stainless Steel



Precut stainless steel shims to support motor bases during alignment or machines leveling.

 Pack Size 10 Pieces

- Easy to use without additional trimming.
- With clearly specified thickness on all plates.
- Made of high quality stainless steel.
- With high hardness, reduce change during use.
- Sale in pack size of 10 pieces.



Order Code	A (mm)	B (mm)	Thickness (mm)	C (mm)	D (mm)
17MST050-005	50	50	0.05	25	16
17MST050-010			0.10		
17MST050-020			0.20		
17MST050-025			0.25		
17MST050-030			0.30		
17MST050-040			0.40		
17MST050-050			0.50		
17MST050-070			0.70		
17MST050-100			1.00		
17MST050-200			2.00		
17MST075-005	75	75	0.05	37.5	21
17MST075-010			0.10		
17MST075-020			0.20		
17MST075-025			0.25		
17MST075-030			0.30		
17MST075-040			0.40		
17MST075-050			0.50		
17MST075-070			0.70		
17MST075-100			1.00		
17MST075-200			2.00		
17MST100-005	100	100	0.05	50	32
17MST100-010			0.10		
17MST100-020			0.20		
17MST100-025			0.25		
17MST100-030			0.30		
17MST100-040			0.40		
17MST100-050			0.50		
17MST100-070			0.70		
17MST100-100			1.00		
17MST100-200			2.00		
17MST125-005	125	125	0.05	62.5	45
17MST125-010			0.10		
17MST125-020			0.20		
17MST125-025			0.25		
17MST125-030			0.30		
17MST125-040			0.40		
17MST125-050			0.50		
17MST125-070			0.70		
17MST125-100			1.00		
17MST125-200			2.00		

# Precut Slotted Shim Pro Sets

17MST



Sets of collected shims with an equal size in a safe and beautiful shock proof box for easy storage, well-organized arrangement, and portability. Bring the professional look for you and your team.



With clearly specified thickness on boxes.

New models, one-size boxes with multiple thickness or dual-sizes boxes with multiple thickness.



With clearly specified thickness on all plates as standard.

Special box set available for customization.

**M** Shim Grade Stainless Steel

Shim Sizes  
50 & 75

17MST000-0AA



Shim Sizes  
100 & 125

17MST000-0BB



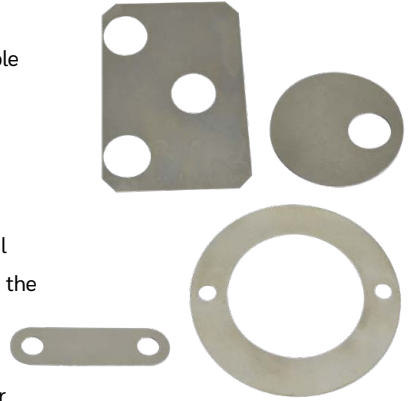
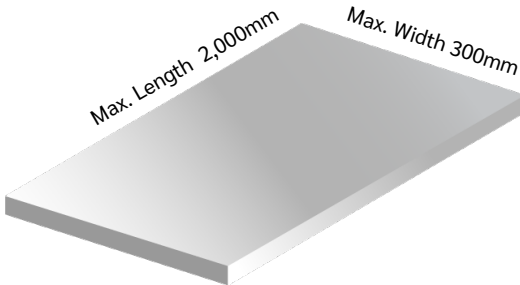
Order Code	Shim Sizes (mm)	Thickness (mm, มิลลิเมตร)									Shim QTY	Total QTY
17MST000-050	50	0.05	0.10	0.20	0.30	0.40	0.50	0.70	1.00	2.00	20pcs/size	180pcs
17MST000-075	75	0.05	0.10	0.20	0.30	0.40	0.50	0.70	1.00	2.00	20pcs/size	180pcs
17MST000-100	100	0.05	0.10	0.20	0.30	0.40	0.50	0.70	1.00	2.00	20pcs/size	180pcs
17MST000-125	125	0.05	0.10	0.20	0.30	0.40	0.50	0.70	1.00	2.00	20pcs/size	180pcs
17MST000-0AA	50 & 75	0.05	0.10	0.20	0.30	0.40	0.50	0.70	1.00	2.00	10pcs/size	180pcs
17MST000-0BB	100 & 125	0.05	0.10	0.20	0.30	0.40	0.50	0.70	1.00	2.00	10pcs/size	180pcs
17MST000-00A	50 & 75	0.05	0.10	0.20	0.30	0.40	0.50		1.00	2.00	20pcs/size	320pcs
17MST000-00B	100 & 125	0.05	0.10	0.20	0.30	0.40	0.50		1.00	2.00	20pcs/size	320pcs

## Shim Cutting Service

We provide shim cutting service as per your design. Suitable for customers who do not want to cut their own shims whether to save time or for the convenience. You can get ready to use precision shims.

For example, cutting shim plates into shape of the original parts to support the wear. Increasing the part life with out the need for total part replacement.

Can also cut shims into logos or symbols for decoration; or into different parts.



**Cut from stock shim materials.**

Stainless Steel or brass

**No minimum quantity**

All prices are based on actual quantities needed

**Edge deburring**

Trim sharp edge for safety

## Ordering Customization

1

Send your design to

**email:** [export@sunrisegr.com](mailto:export@sunrisegr.com)

**line:** @sunrisegroup

2

We will check the design and send back the quotation

3

In case you can not provide workable drawing file.

We provide drafting service based on your design.



# SUNRISE

Agent/Distributor

**SUN RISE TECHNOLOGIES Co.,LTD.**

969 moo 5 Praksa Rd., Praksa Mai  
Muang Samuthprakarn, Samuthprakarn, 10280, Thailand

**Website:** [sunrise.co.th](http://sunrise.co.th)

**Tel:** +662-030-0092    **Fax:** +662-324-3190

**Email:** [export@sunrisegr.com](mailto:export@sunrisegr.com)    **LINE** @sunrisegroup